

Art supplies checklist for How to Paint Birds with Jane Kim

PAINT

Golden Fluid Acrylic paints, set of 10 colors:

- | | |
|--|---|
| <input type="checkbox"/> Benzimidazolone Yellow Medium | <input type="checkbox"/> Phthalo Green (Blue Shade) |
| <input type="checkbox"/> Pyrrole Red | <input type="checkbox"/> Yellow Oxide |
| <input type="checkbox"/> Quinacridone Magenta | <input type="checkbox"/> Burnt Sienna |
| <input type="checkbox"/> Ultramarine Blue | <input type="checkbox"/> Carbon Black |
| <input type="checkbox"/> Phthalo Blue (Green Shade) | <input type="checkbox"/> Titanium White |
| <input type="checkbox"/> Titan Buff | <input type="checkbox"/> Pyrrole Orange |
| <input type="checkbox"/> Van Dyke Brown Hue | |

PAPER

- ☐ **Legion Stonehenge Hot Press**, 9×12" 140-lb weight or any hot press painting paper of similar weight
- ☐ **Bachmore** or **Strathmore drawing paper** 8×10 or 9×12 inches
- ☐ **Bachmore's Artist's Tracing Paper**, we found this to be the most transparent
- ☐ **Graphite transfer paper**, such as Craftsmart Graphite Paper

BRUSHES

- ☐ **Pentel Aquash**, set of four brushes, 3 rounds, one flat; or other brand of water brush, but buy at least one small round and either one large round or one flat brush

PALETTE

- ☐ **Masterson Art's Sta-Wet Handy Palette** or any other **wet** palette for acrylic paints

OTHER SUPPLIES

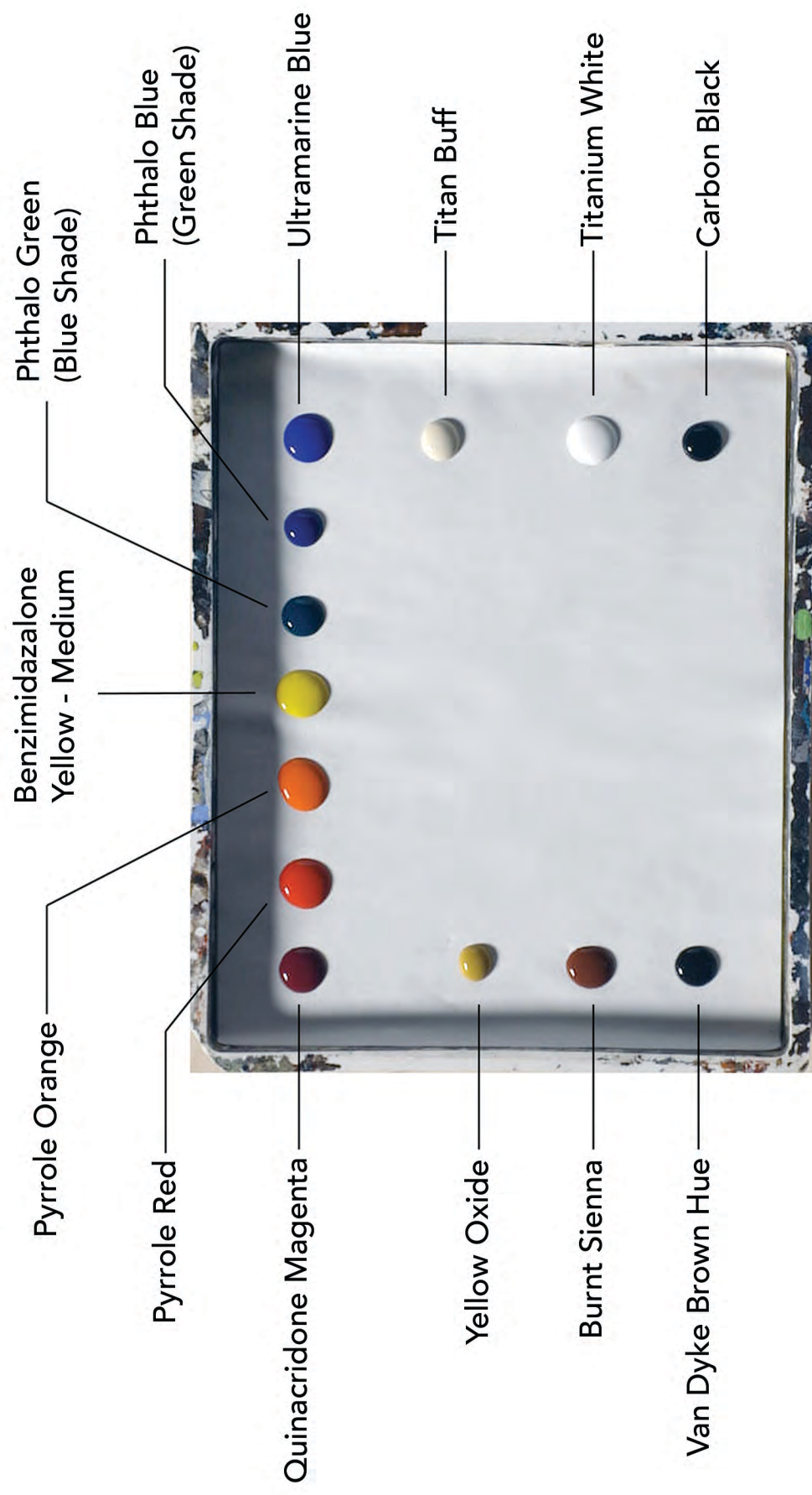
- ☐ **Artist tape**
- ☐ **Number 2 pencil** or **mechanical pencil** with a 0.5–0.7mm lead
- ☐ **Kneaded eraser**
- ☐ **Eraser stick**, such as Factic(R) BM2, or another soft eraser
- ☐ **Ball-point or gel pen** in two colors other than black
- ☐ **Rags** (cotton works best) and/or **paper towels**
- ☐ **Spray bottle**
- ☐ A **hair dryer** with a cold setting to dry paint more quickly
- ☐ Access to a **color printer**; printing your reference photos is recommended

NOTES

.....

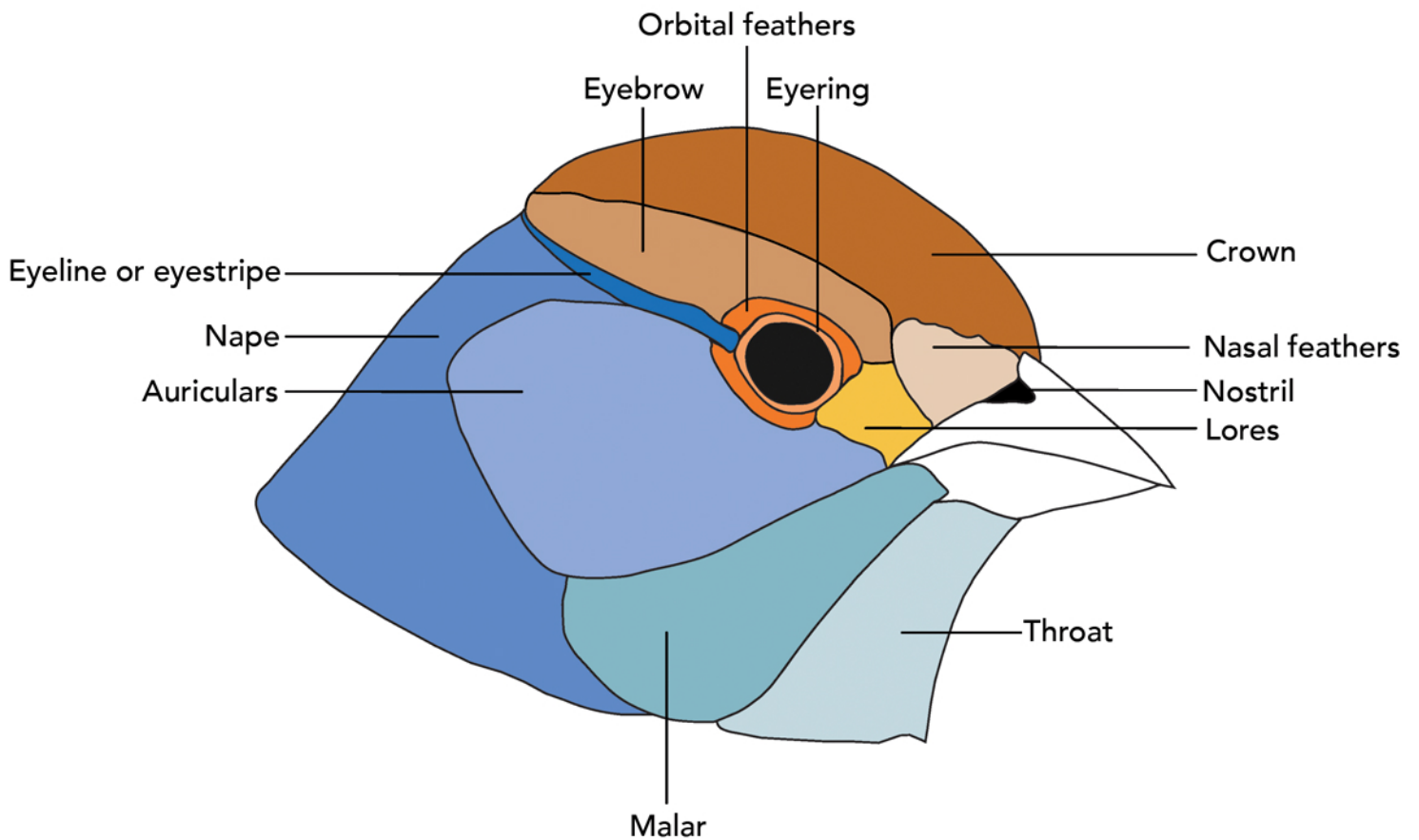
.....

.....

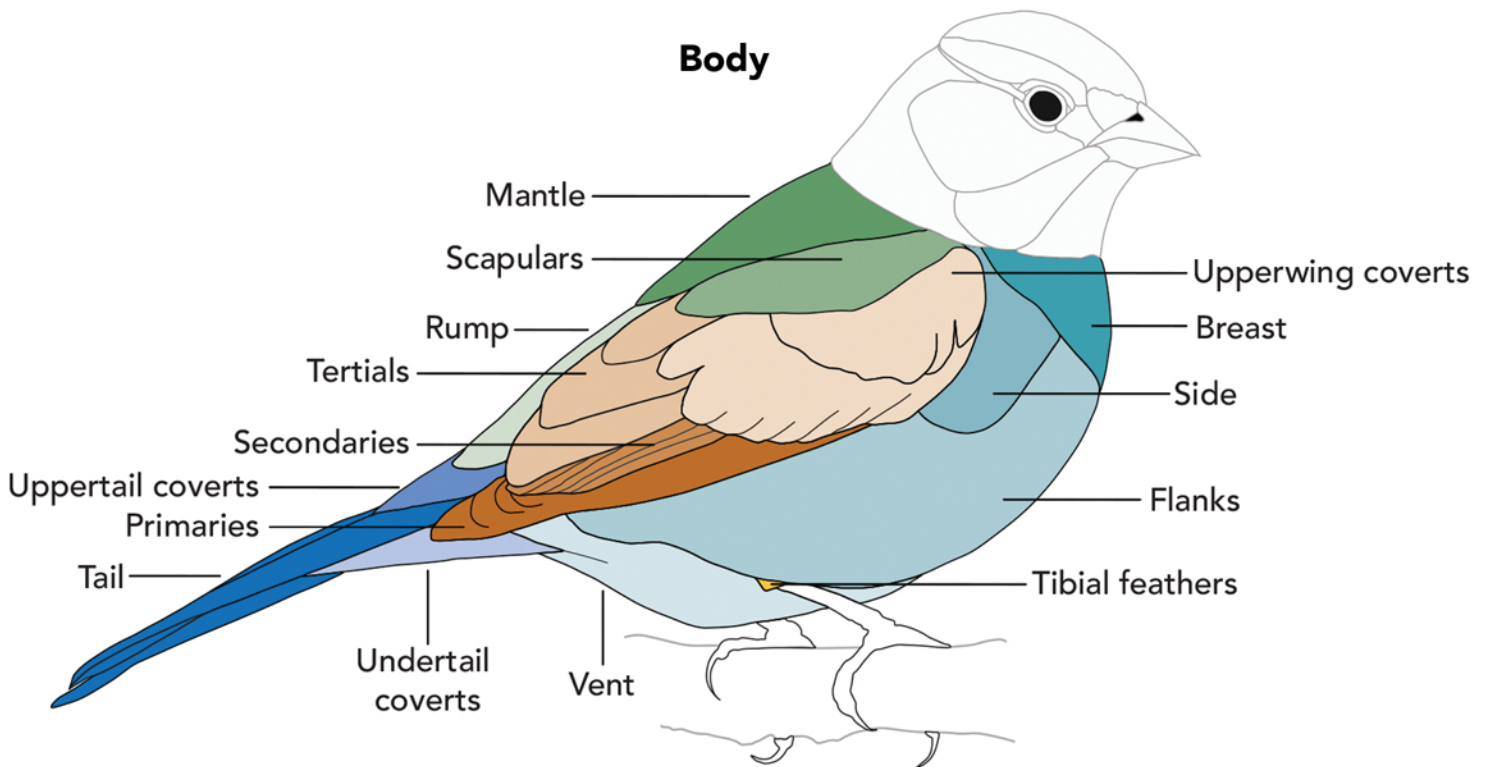


Palette Setup

Head

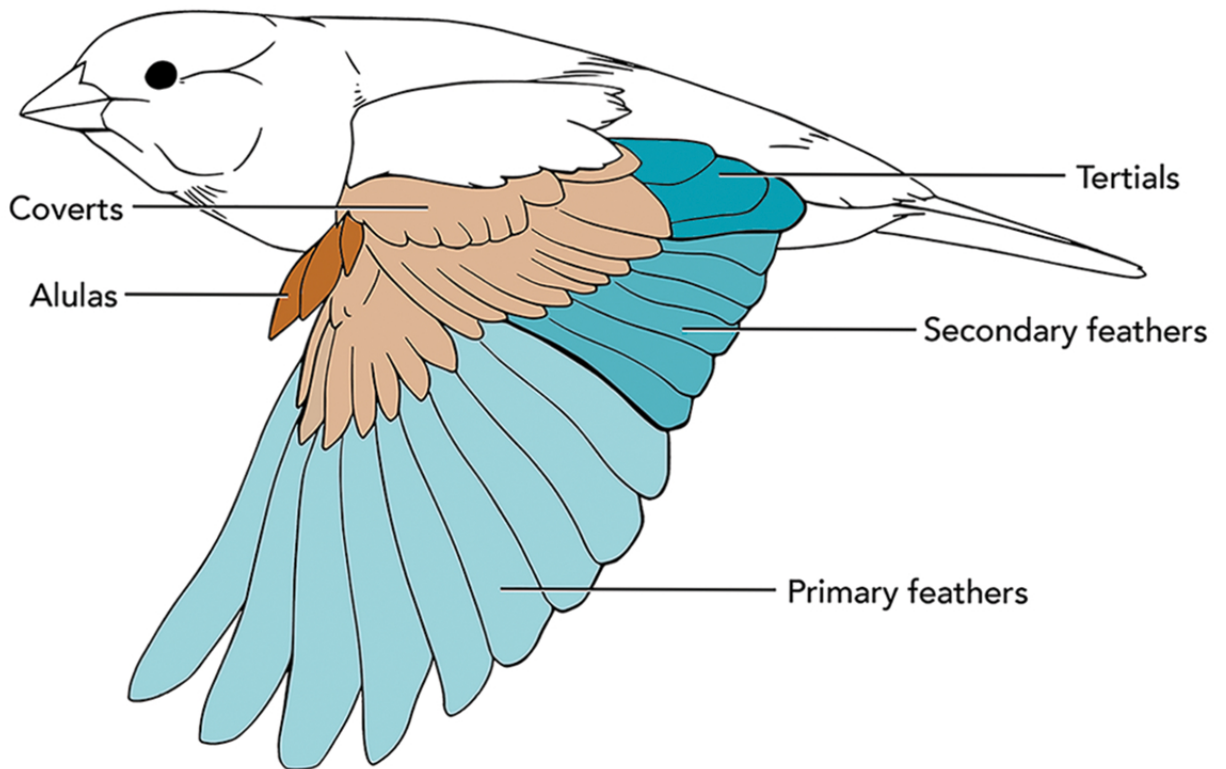


Body

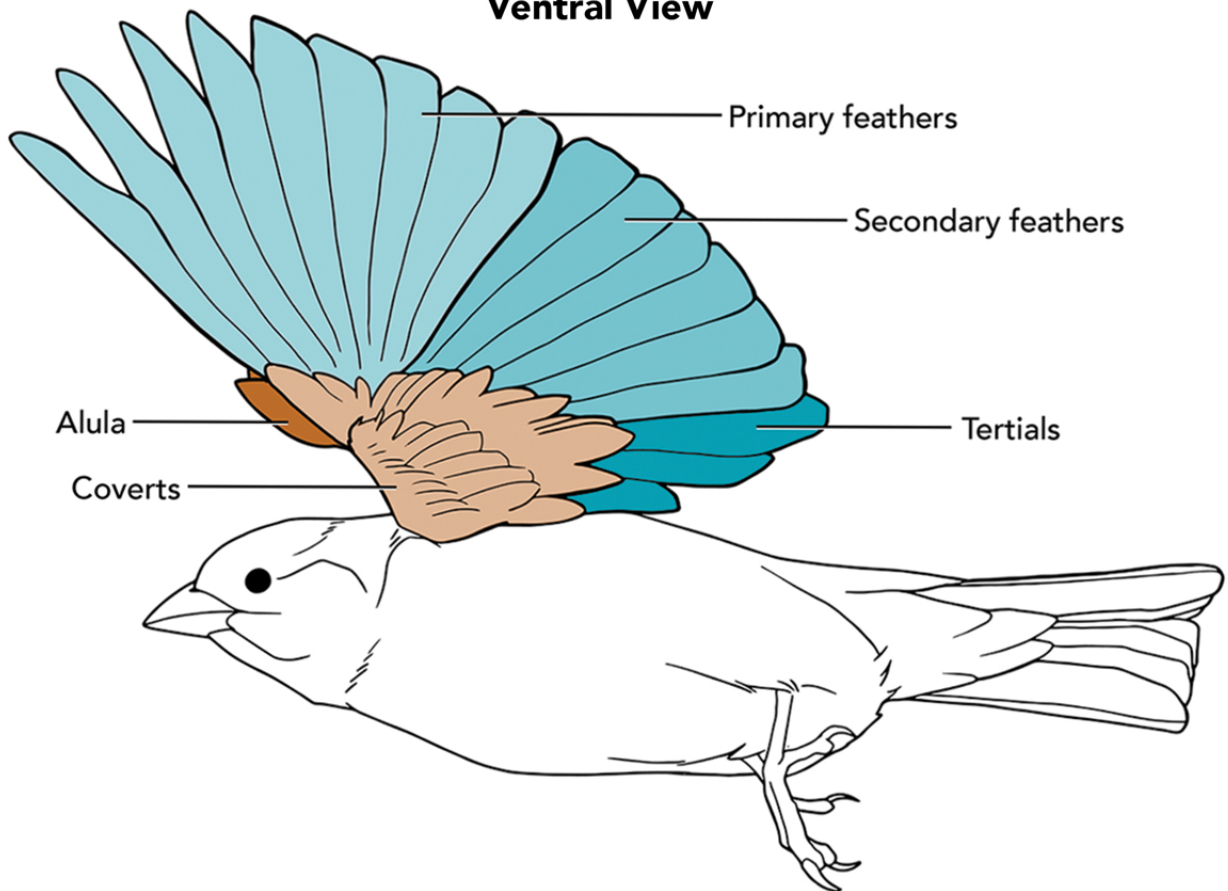


Feather Groups: Head and Body

Dorsal View

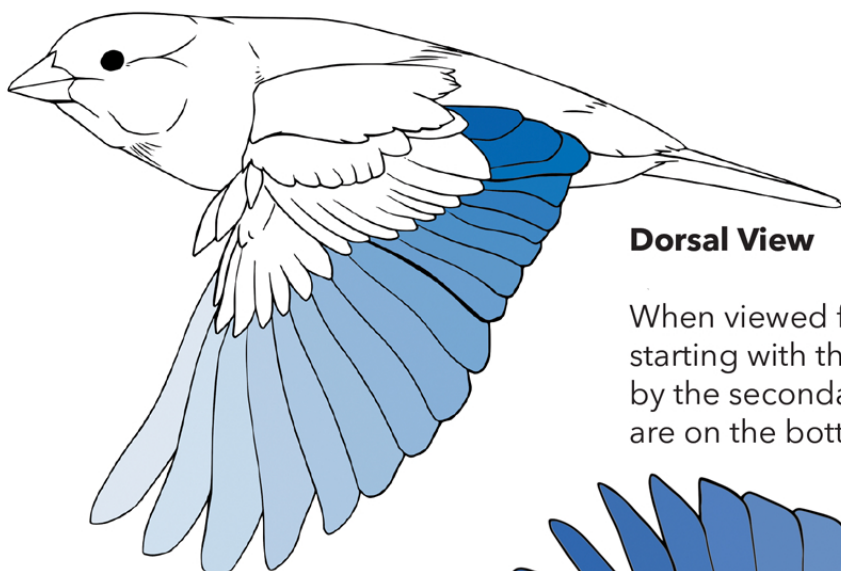


Ventral View



Feather Groups: Wings

How Primary, Secondary, and Tertiary Feathers Overlap on the Wing

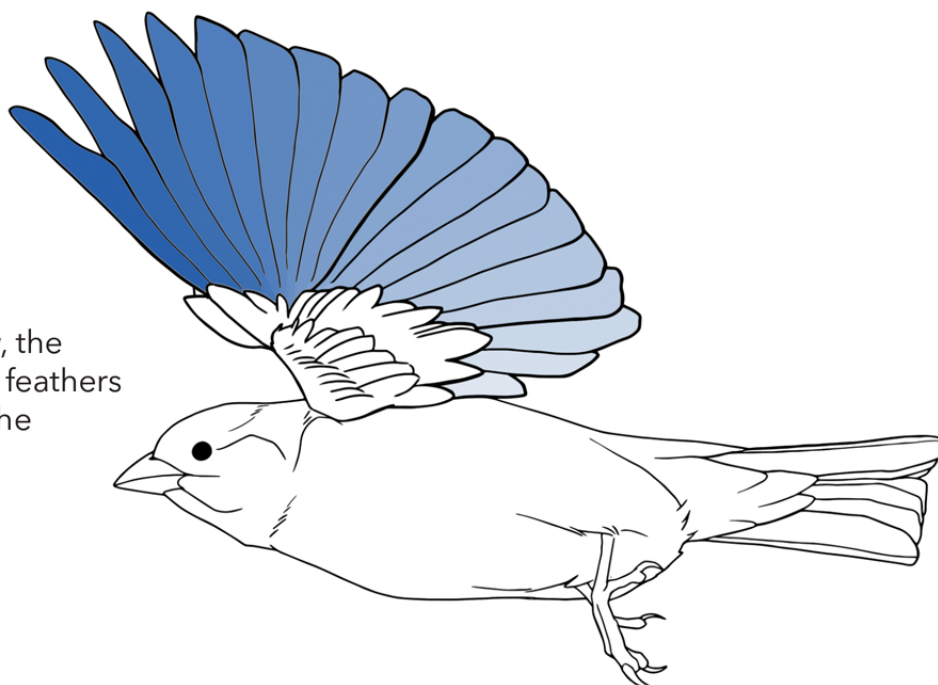


Dorsal View

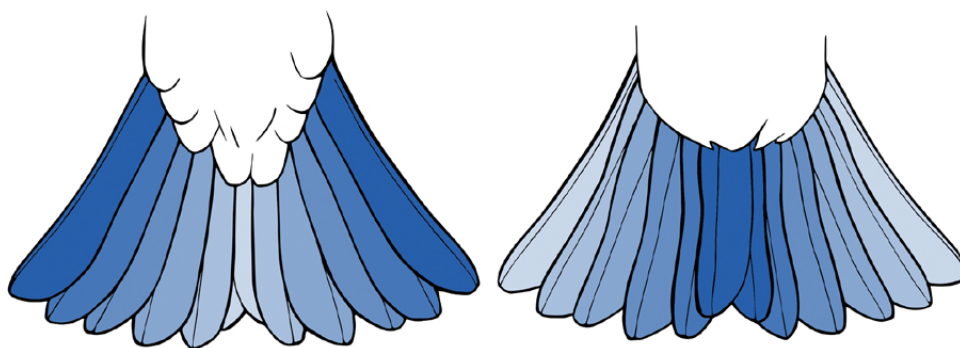
When viewed from above, wing feathers overlap starting with the tertiaries on top (darkest blue), followed by the secondaries. The primary feathers of the wing are on the bottom (lightest blue).

Ventral View

When the wing is seen from below, the order is reversed, with the primary feathers on top and the tertiary feathers on the bottom.



How Feathers Overlap on the Tail



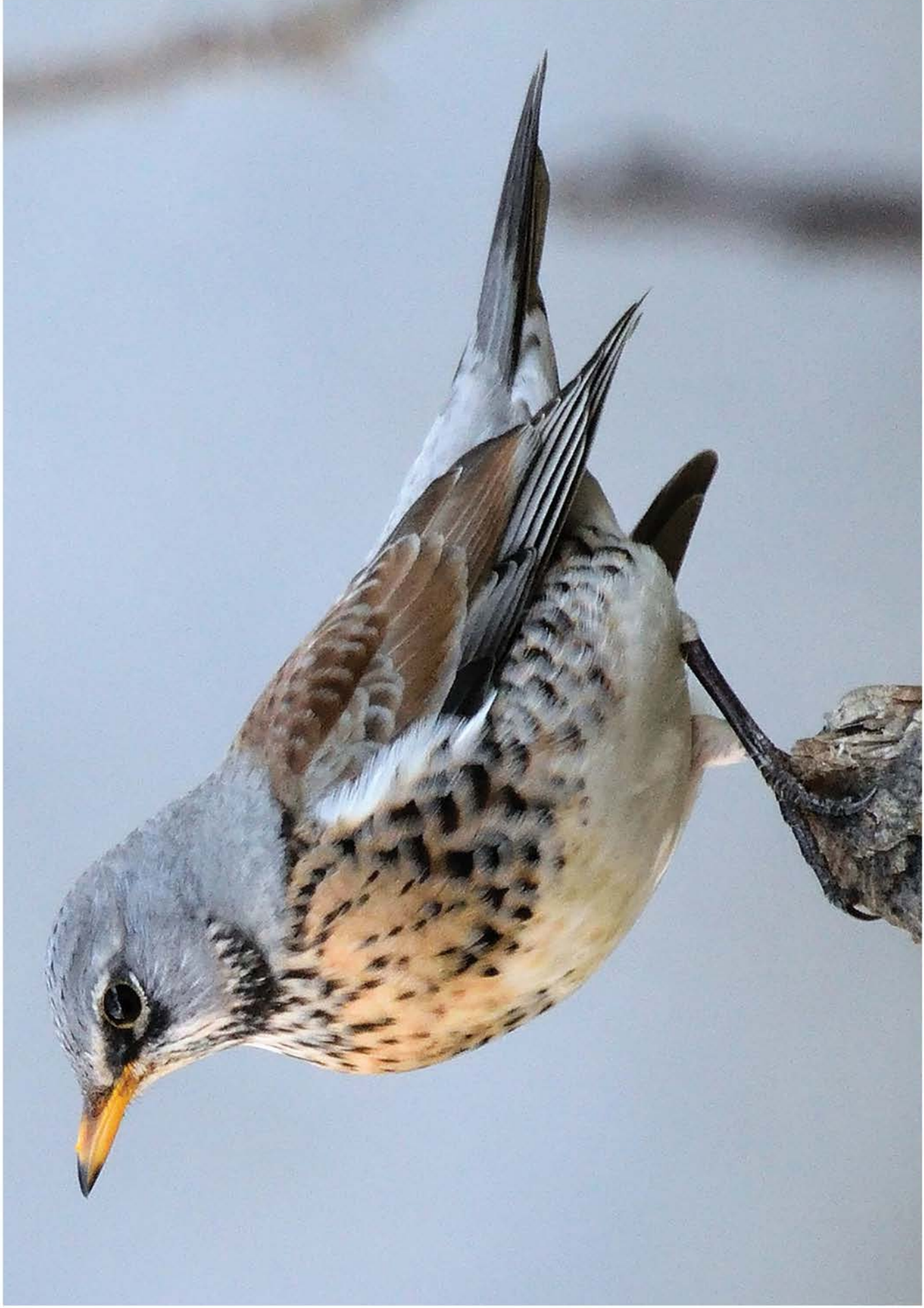
Notice how the two "anchor" feathers in the middle of the tail sit at the bottom when seen from below (left) and sit on top when seen from above (right).



American Robin by Daniel Irons/Macaulay Library



American Robin by Christoph Moning/Macaulay Library



Fieldfare by Manuel Segura Herrero/Macaulay Library



Beach Thick-knee by David Irving/Macaulay Library



Belted Kingfisher by Derek Hameister/Macaulay Library

Bird Academy: How to Paint Birds with Jane Kim



American Robin by Jeff Ellerbusch/Macaulay Library



Great Blue Heron by Daniel Irons/Macaulay Library

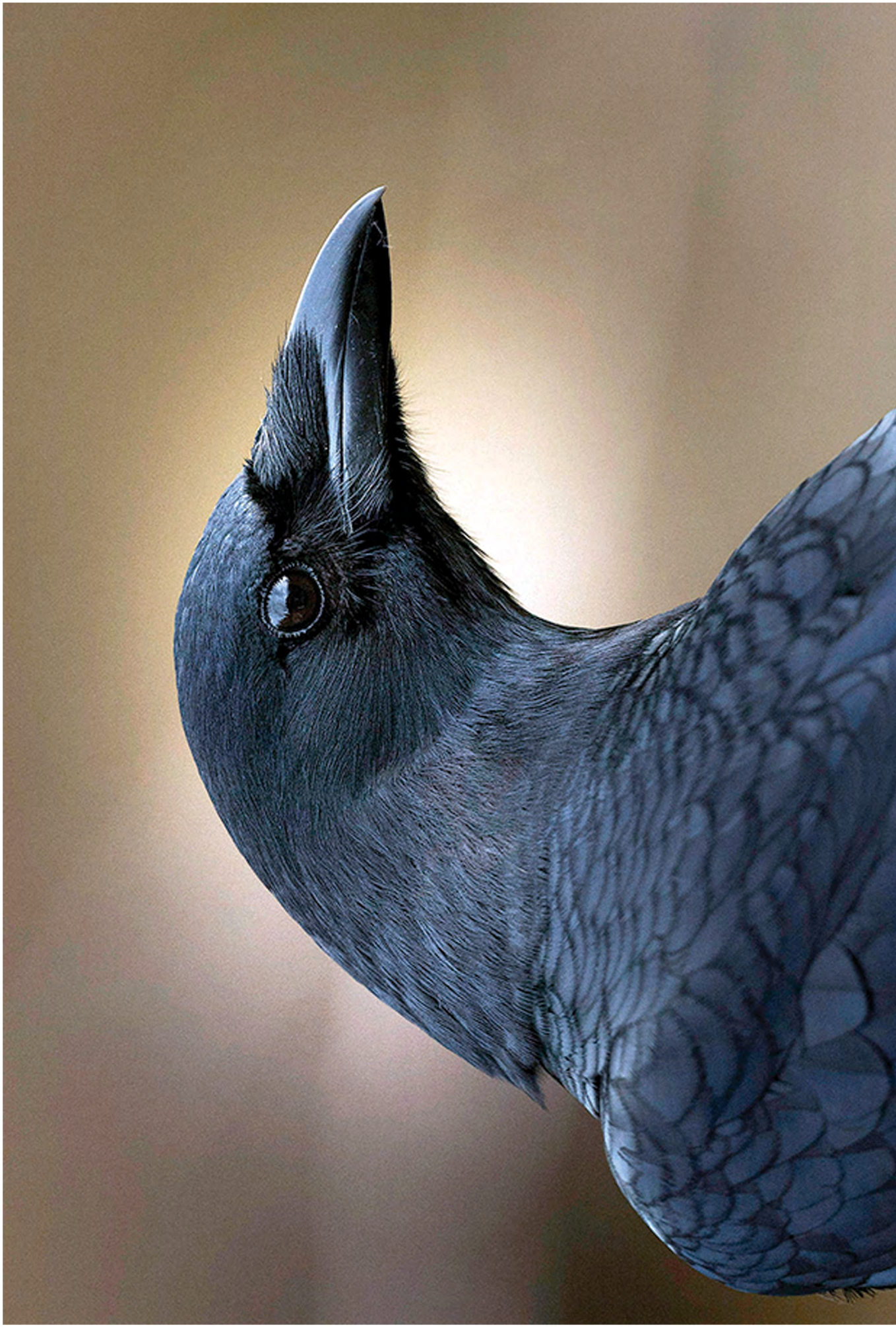


Northern Cardinal by Ryan Schain/Macaulay Library



Lark Sparrow by Andrew Newmark/Macaulay Library

Bird Academy: How to Paint Birds with Jane Kim



American Crow by Ian Routley/Macaulay Library



House Sparrow by Brad Imhoff/Macaulay Library



Buff-breasted Sandpiper by Ian Davies/Macaulay Library



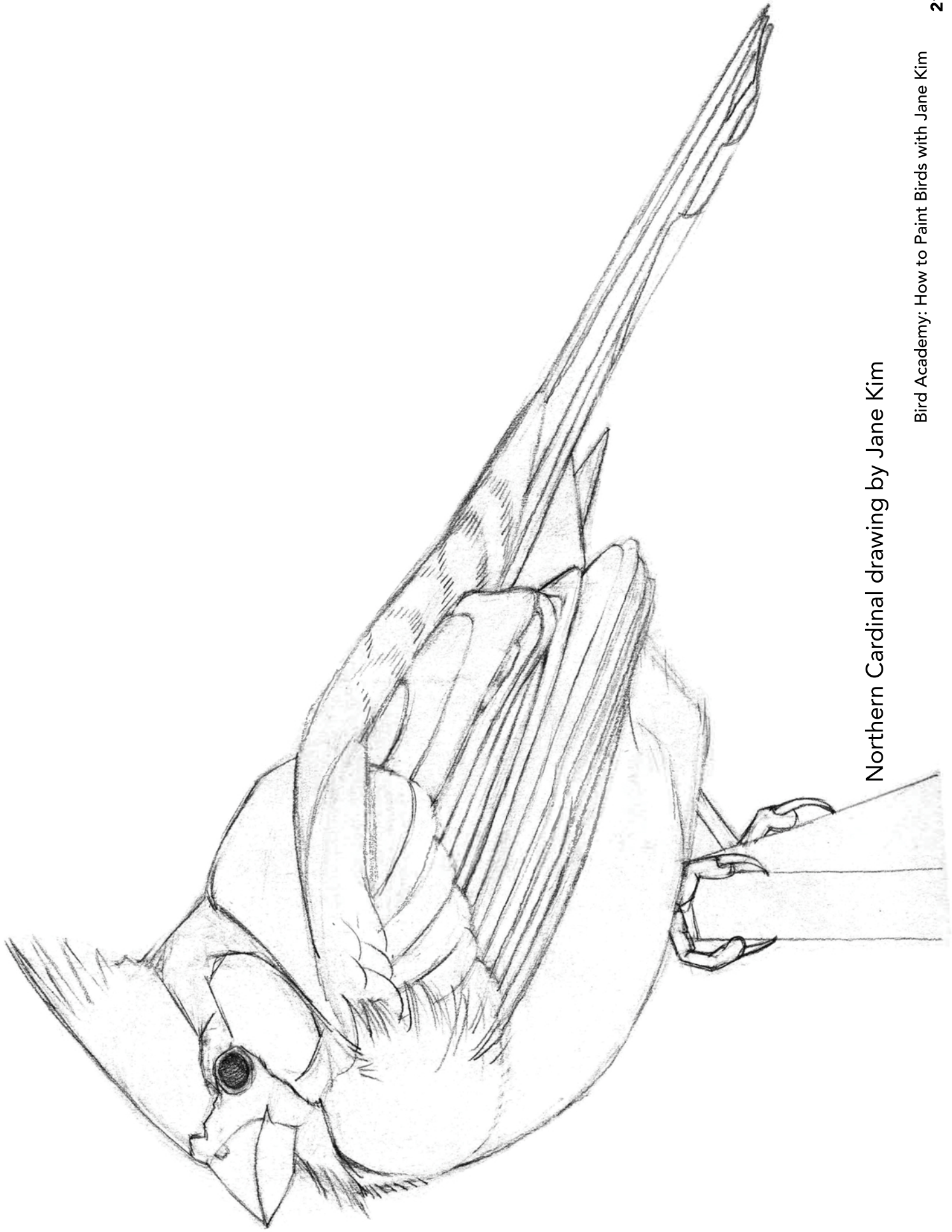
Buff-breasted Sandpiper by Ian Davies/Macaulay Library



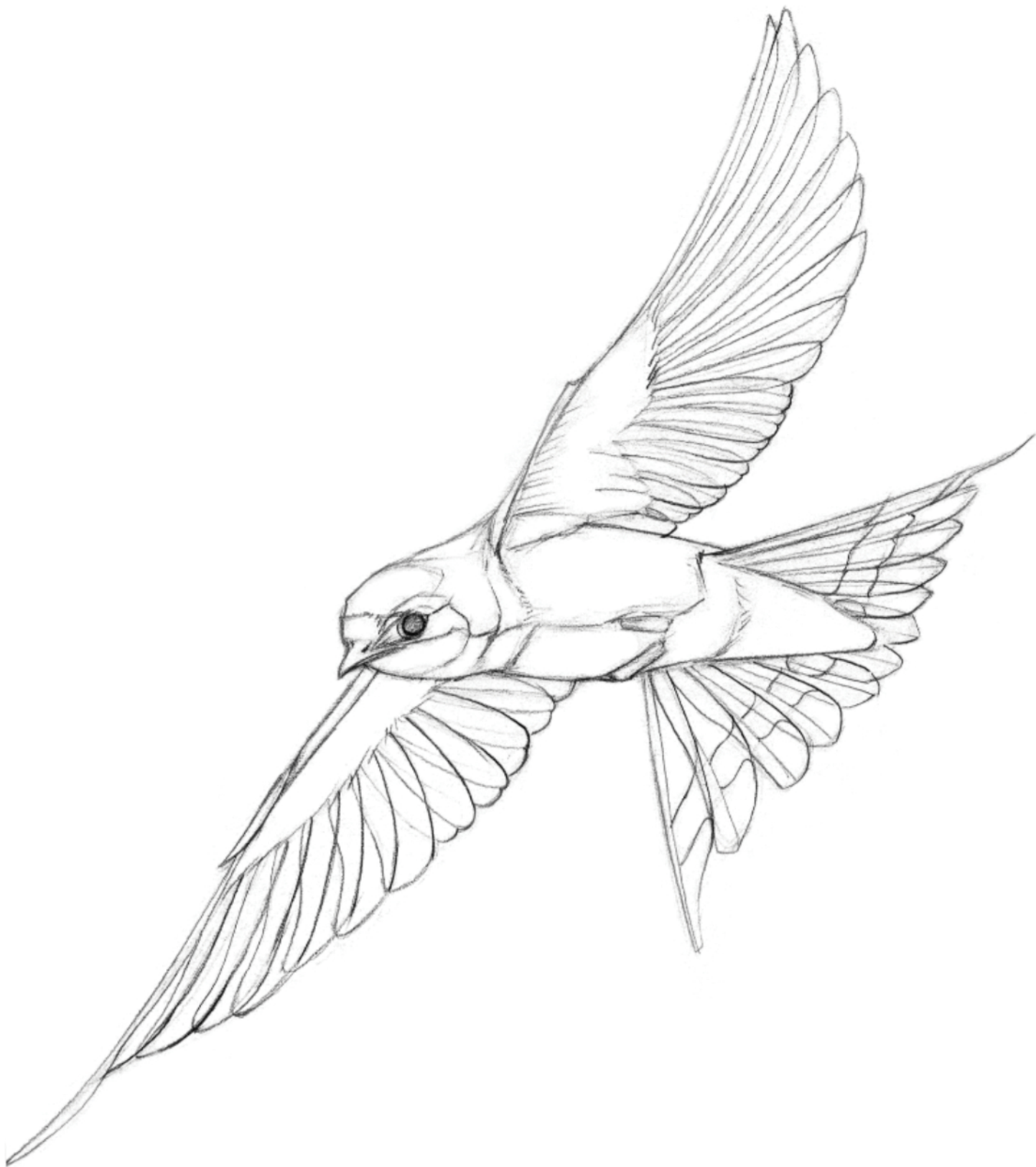
Chestnut-headed Tesia by Ngoc Sam Thuong Dang/Macaulay Library



Barn Swallow by Ryan Sanderson/Macaulay Library



Northern Cardinal drawing by Jane Kim



Barn Swallow drawing by Jane Kim